

NO.	PART NUMBER	DESCRIPTION	QTY.
1	ISW60.010.000	HD rear bumper	1
2	ISW51.000.001	Flat	2
3	ISW51.100.000	Electric Connection	1
4	5003	Plug Plastic 100x50	2
5	9213215414	Identification plate	1
6	1012	Hex Bolt M12x1.75x30 DIN 933	4
7	1033	Hex Bolt M12x1.25x35 DIN 961	6
8	6006	Washer 12x24 DIN 125	10
9	6005	Spring washer 12 DIN 127	10

Maximum Tightening Torques

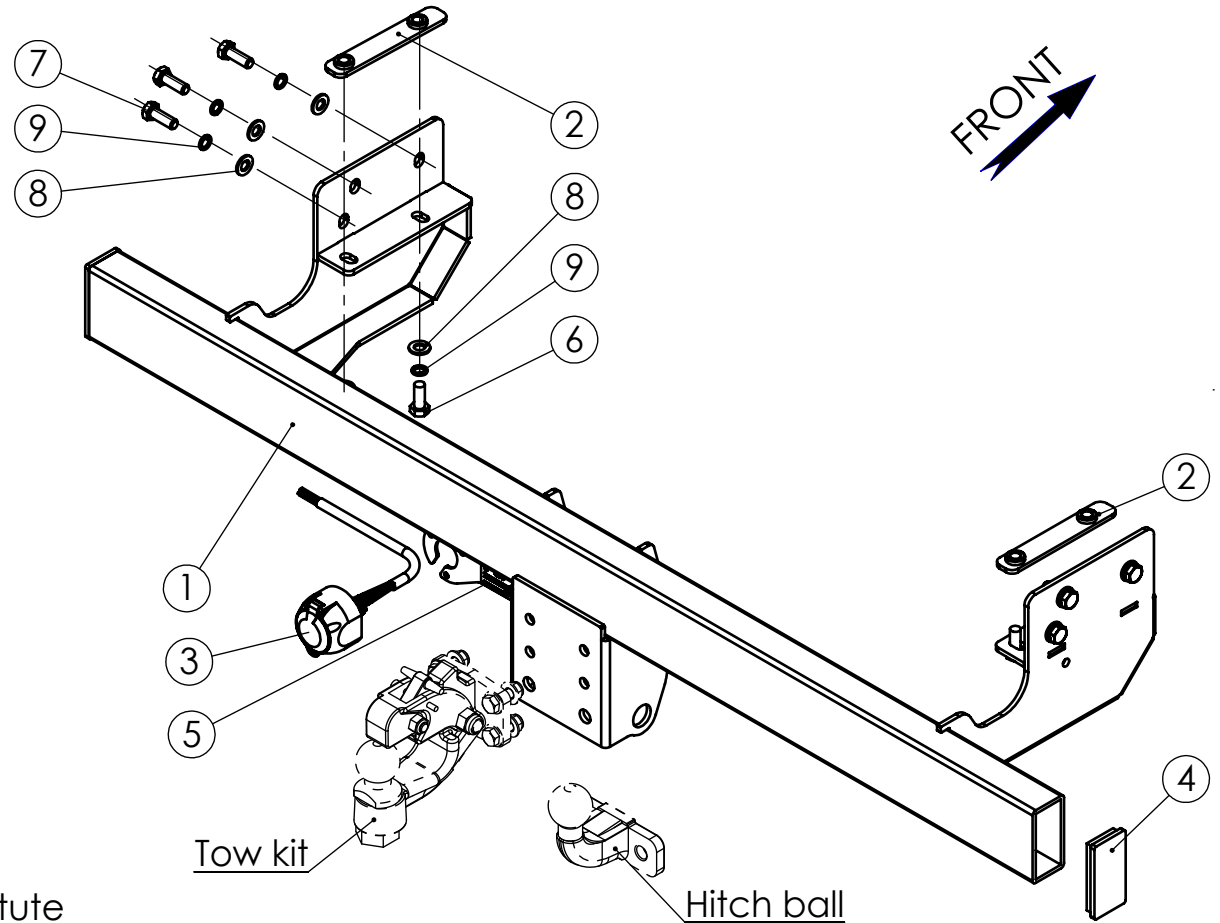
M18(8.8)	90 Nm
UNC5/8"Gr.5	175 Nm

1. THE TOW BAR APPROVED:

- for transmission 4x4 with brakes towing weight of 2100 kg;
- for transmission 4x2 with brakes towing weight of 2025 kg;
- for all transmissions without brakes towing weight of 750 kg

2. BEFORE MOUNTING REMOVE THE BUMPER.

Registration Licensing N:9213215414 Standards Institute
from date 22.07.2012



	NAME	SIGN.	DATE	Drawing number	Product Description	
CHG.	David		08.03.17	ISW60.000.000	Vehicle Manuf.	ISUZU
DWN.	Charnay		20.08.12		Vehicle Model	D-MAX
CHKD.	David		08.03.17	Drawing description	Vehicle Version	Double Cab
CONFIRM	Dani			TOWING DEVICE	VIN	MPATFS87JHT001916
ASFIR LTD.				Catalogue number	Year of Product.	2012-2017
				530110	Gear Shift	AUTOMATIC/MANUAL
				Weight,kg 36.0	Motor Model	DIESEL 2.5TD / 1.9TD
					Transmission	4X2, 4X4

Confidential

All rights in and to this document are property of ASFIR Ltd. and reserved to it. This document is forwarded to the recipient under the condition of and subject to the obligation of the recipient to keep the confidentiality of its contents. Copying transfer of distribution of this document or its contents and the use of it not for the purpose intended-are strictly forbidden.