

Confidential

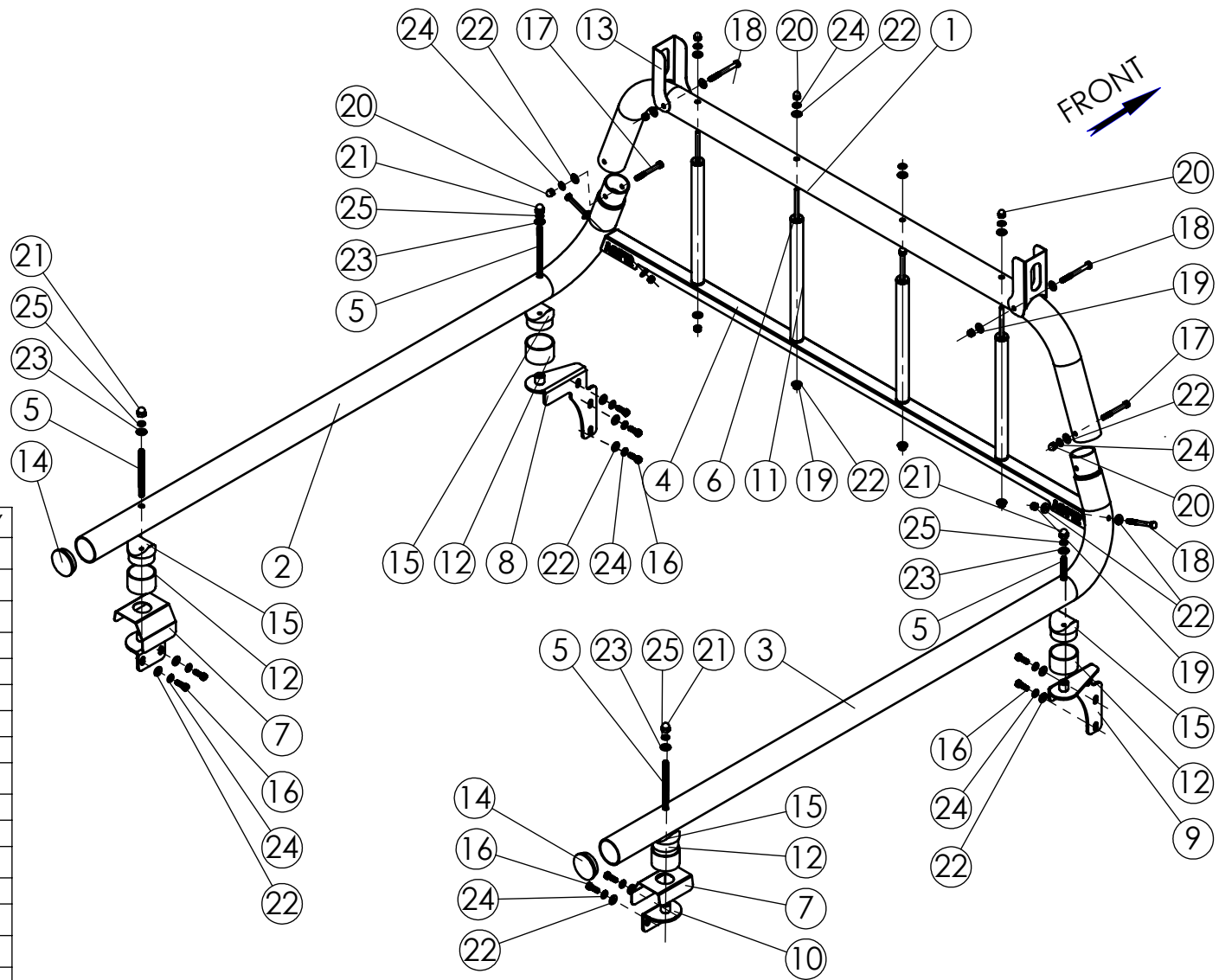
All rights in and to this document are property of ASFIR Ltd. and reserved to it. This document is forwarded to the recipient under the condition of and subject to the obligation of the recipient to keep the confidentiality of its contents. Copying transfer of distribution of this document or its contents and the use of it not for the purpose intended are strictly forbidden.

Maximum Tightening Torques

M8 (8.8)	25 Nm
M10 (8.8)	50 Nm

The covers (item 7) are used when plastic bedline is installed on vehicle.

NO	PART NUMBER	DESCRIPTION	QTY
1	ISW54.000.001	Central pipe	1
2	ISW54.000.002	Left pipe	1
3	ISW54.000.003	Right pipe	1
4	ISW54.000.004	Lower bar	1
5	ISW54.000.006	Thread rod	4
6	ISW54.000.007	Thread rod M8	4
7	ISW54.000.008	Cover	2
8	ISW54.011.000	Left front bracket	1
9	ISW54.011.000R	Right front bracket	1
10	ISW54.020.000	Rear bracket	2
11	ISW54.030.000	Pole	4
12	DOW09.000.004	Spacer	4
13	DOW09.000.007	Holder	2
14	2221	Plastic plug 2"	2
15	10133	Round black spacer 60	4
16	1168	Hex Bolt M8x25 DIN 933	10
17	1210	Hex Bolt M8x70 DIN 931	2
18	1058	Hex Bolt M8x80 DIN 931	4
19	3005	Hex Nut Nylock M8 DIN 985	8
20	1300	Domed Cap Nut M8 DIN 1587	6
21	3101	Domed Cap Nut M10x1.5 DIN 1587	4
22	6003	Washer 8x20 DIN 125	28
23	6023	Washer 10x20 DIN 125	4
24	6001	Spring washer 8 DIN 127	16
25	6008	Spring washer 10 DIN 127	4
26	ISW54.000.000I	INSTRUCTIONS	1



			NAME	SIGN.	DATE	Drawing number	Product Description	
CHG.			David		08.03.17	ISW54.000.000	Vehicle Manuf.	ISUZU
DWN.			Slava		17.06.12		Vehicle Model	D-MAX
PLN.			David		08.03.17	Drawing description Utility Rack	Vehicle Version	Double Cab
CONFIRM			Dani				VIN	MPATFS87JHT001916
ASFIR LTD.						Catalogue number 530181	Year of Product.	2012-2017
							Gear Shift	AUTOMATIC/MANUAL
						Weight, kg	30	Motor Model
						Transmission	4X4	