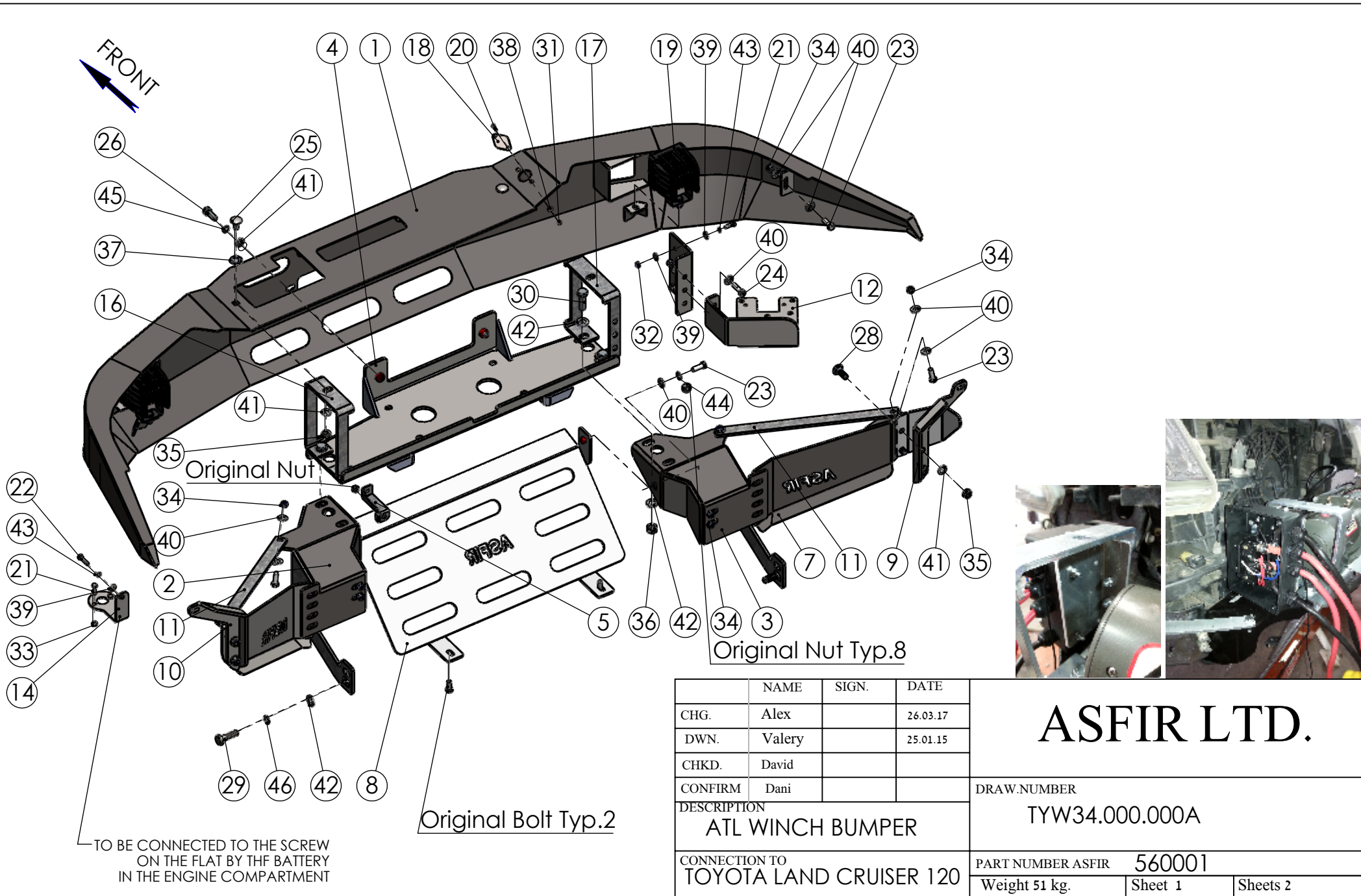


All rights in and to this document are property of ASFIR Ltd. and reserved to it. This document is forwarded to the recipient under the condition of and subject to the obligation of the recipient to keep the confidentiality of its contents. Copying transfer of distribution of this document or its contents and the use of it not for the purpose intended-are strictly forbidden.



	NAME	SIGN.	DATE
CHG.	Alex		26.03.17
DWN.	Valery		25.01.15
CHKD.	David		
CONFIRM	Dani		
DESCRIPTION			
ATL WINCH BUMPER			
CONNECTION TO TOYOTA LAND CRUISER 120			

ASFIR LTD.		
DRAW.NUMBER		
TYW34.000.000A		
PART NUMBER ASFIR		560001
Weight 51 kg.	Sheet 1	Sheets 2

NO.	PART NUMBER	DESCRIPTION	QTY.
1	TYW34.100.000A	Bumper	1
2	TYW34.010.000L	Left Bracket	1
3	TYW34.010.000R	Right Bracket	1
4	TYW34.030.000	Winch Mounting Plate	1
5	TYW34.000.001	Plug	1
6	TYW34.000.002	Left Plug	1
7	TYW34.000.003	Right Plug	1
8	TYW34.000.004	Lower Skid Plate	1
9	TYW34.000.005R	Right Wing clip	1
10	TYW34.000.005	Left Wing Clip	1
11	TYW34.000.006	Flat	2
12	TYW34.000.007	Solenoid Holder	1
13	TYW34.000.008	Plug	1
14	TYW34.000.009	Adapter to Switch	1
15	TYW34.000.017	Solenoid Holder for AS9500	1
16	SW25.010.001	Bumper Holder Left	1
17	SW25.010.001A	Solenoid Holder	1
18	NSW12.000.003	Closing plate	1
19	917503	Led Work Light 4 inch 20W Sammoon	2
20	1098	PAN HEAD PHILIPS SCREW M4X16	2
21	1104	Hex Bolt M6x20 DIN 933	6
22	1167	Hex Bolt M6x25 DIN 933	1
23	1168	Hex Bolt M8x25 DIN 933	8
24	1209	Hex Bolt M8x30 DIN 933	2

NO.	PART NUMBER	DESCRIPTION	QTY.
25	1035	Mushroom Head Square Neck Bolt M10x1.5x20	2
26	1029	Socket Head Cap Screw M10x1.5x25 DIN 912	2
27	1129	Mushroom head square neck Bolt M10x25 DIN 603	2
28	1199	Mushroom head square neck Bolt M10x30 DIN 603	2
29	1040	Hex Bolt M12x1.25x40 DIN 961	2
30	1004	Hex Bolt M12x1.75x40 DIN 933	4
31	3039	Hex Nut Nylock M4 DIN 985	2
32	3019	Hex Nut M6 DIN 934	4
33	3006	Hex Nut Nylock M6 DIN 985	2
34	3005	Hex Nut Nylock M8 DIN 985	12
35	3037	Hex Nut Nylock M10x1.5 DIN 985	6
36	3001	Hex Nut Nylock M12x1.75 DIN 985	4
37	6034	Washer plastic 13x24x2	2
38	6145	Washer 4x10 DIN 125	2
39	6018	Washer 6x16	9
40	6003	Washer 8x20 DIN 125	18
41	6023	Washer 10x20 DIN125	8
42	6006	Washer 12x24 DIN 125	10
43	6009	Spring washer 6 DIN 127	5
44	6001	Spring washer 8 DIN 127	2
45	6005	Spring washer 12 DIN 127	2
46	6008	Spring washer 10 DIN 127	2

ASFIR LTD.	Drawing number	Drawing description
	TYW34.000.000A	ATL WINCH BUMPER
	Sheet 2	Vehicle Toyota Land Cruiser Sheets 2