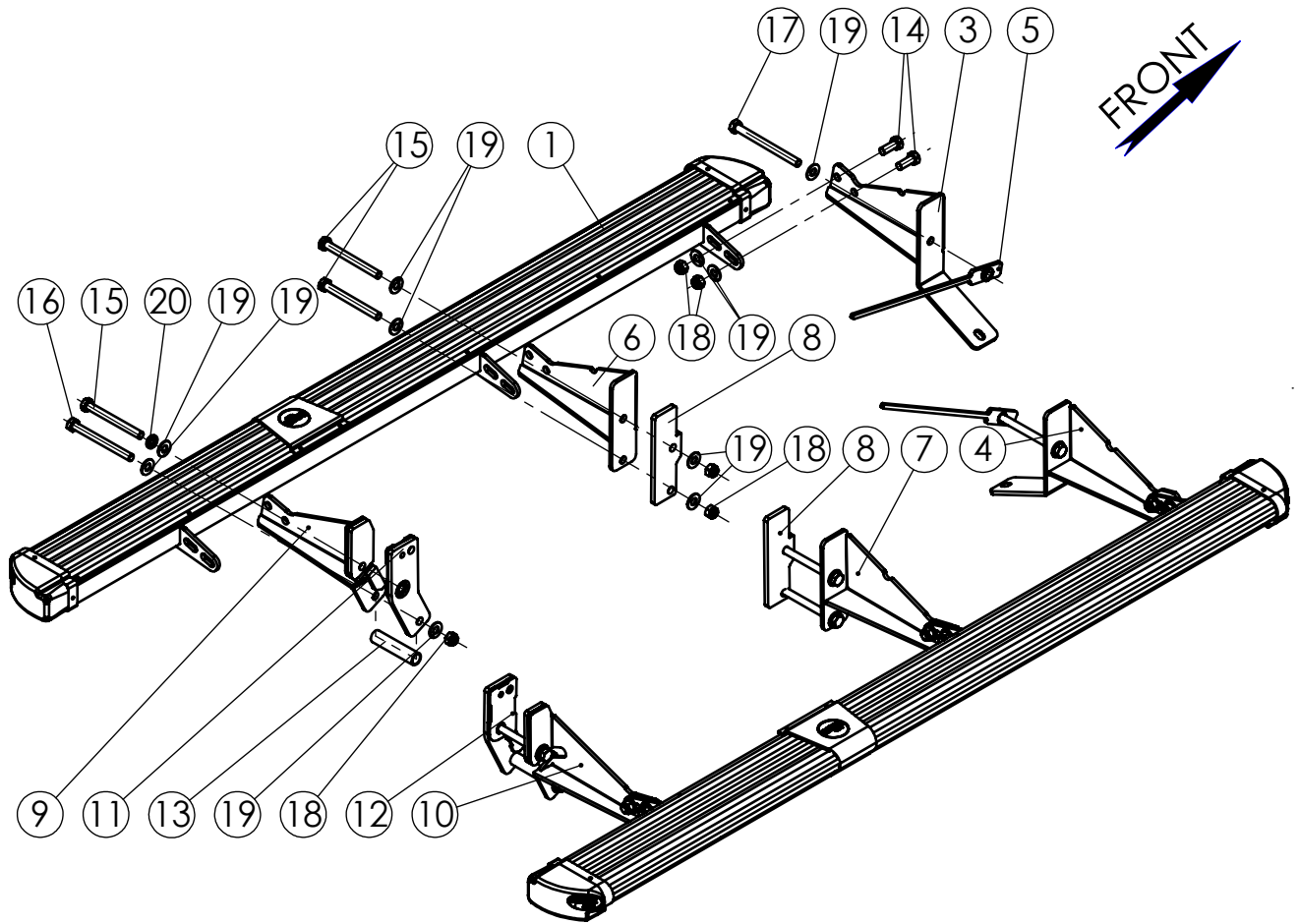


NO.	PART NUMBER	DESCRIPTION	QTY.
1	TYM48.100.000	LEFT STEP	1
2	TYM48.100.000R	RIGHT STEP	1
3	TYM27.000.003L	LEFT FRONT BRACKET	1
4	TYM27.000.003R	RIGHT FRONT BRACKET	1
5	TYM27.000.004	SPACER NUT M12	2
6	TYM21.000.001L	LEFT BRACKET	1
7	TYM21.000.001R	RIGHT BRACKET	1
8	TYM21.000.002	MIDDLE CONNECT	2
9	TYM21.030.000L	LEFT REAR BRACKET	1
10	TYM21.030.000R	RIGHT REAR BRACKET	1
11	TYM21.040.000L	REAR LEFT CONNECT	1
12	TYM21.040.000R	REAR RIGHT CONNECT	1
13	8520	SPACER 1/2" L=93	2
14	1012	Hex bolt M12x1.75x30 DIN 933	12
15	1013	Hex bolt M12x1.75x120 DIN 931	6
16	1014	Hex bolt M12x1.75x130 DIN 931	2
17	1015	Hex bolt M12x1.75x140 DIN 931	2
18	3013	Hex Nut Nylock M12x1.75 DIN 985	18
19	6006	Washer 12x24 DIN125	30
20	6005	Spring washer 12 DIN 127	2



Maximum Tightening Torques	
M12 (8.8)	85 Nm

Confidential

All rights in and to this document are property of ASFIR Ltd. and reserved to it. This document is forwarded to the recipient under the condition of and subject to the obligation of the recipient to keep the confidentiality of its contents. Copying, transfer or distribution of this document or its contents and the use of it not for the purpose intended-are strictly forbidden.

NAME	SIGN.	DATE	Drawing number	Product Description	
CHG.	Charnay	03.03.16	TYM51.000.000B	Vehicle Manuf.	TOYOTA
DWN.	Charnay	06.12.09		Vehicle Model	LAND CRUISER 120
PLN.	David	David 3036	Drawing description	Vehicle Version	LWB
CONFIRM	Dani		Side Step Protector Black	VIN	
ASFIR LTD.			Catalogue number	Year of Product.	2003-2009
			560058	Gear Shift	AUTOMATIC
			Weight,kg 34	Motor Model	PETROL
				Transmission	4X4