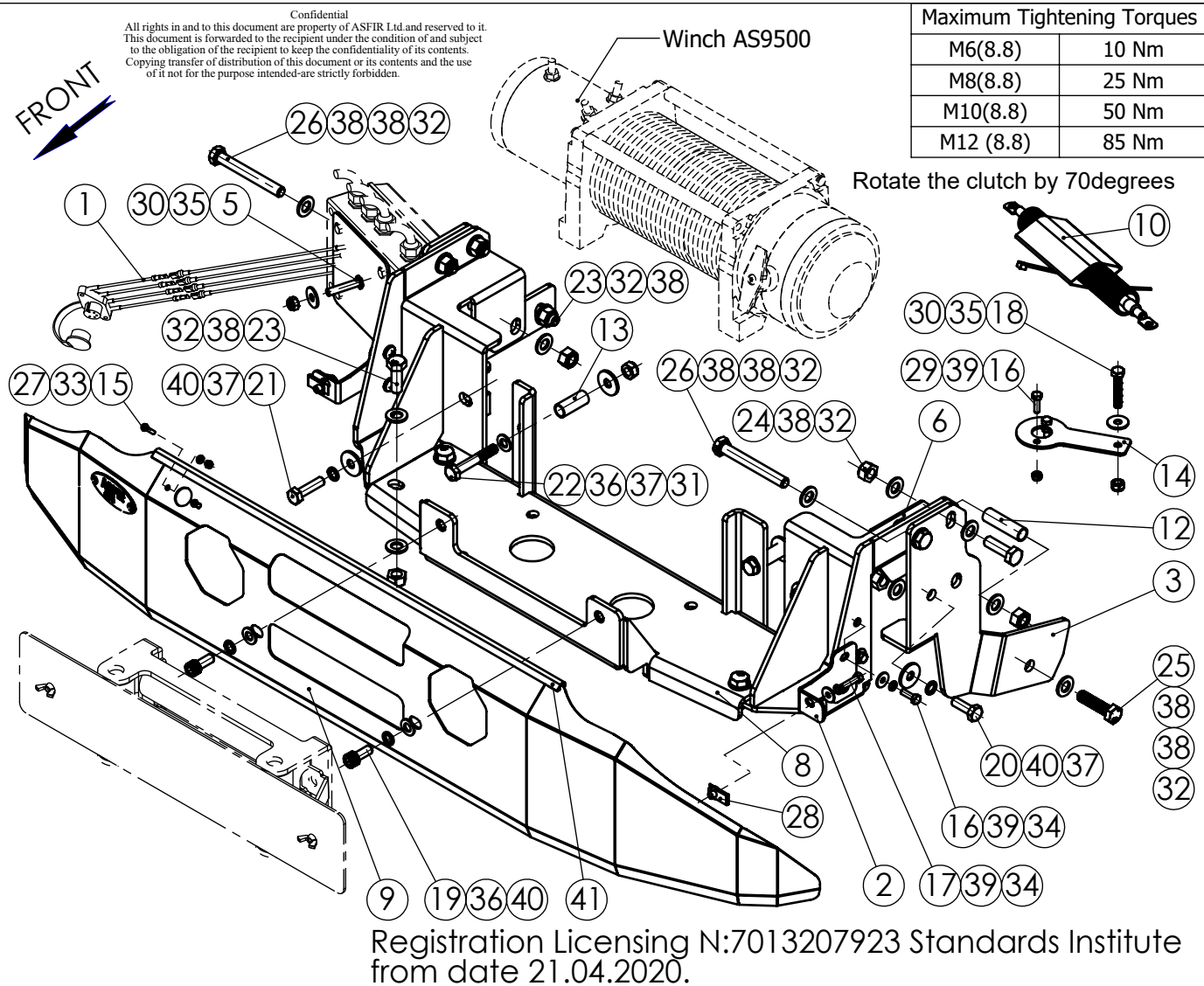
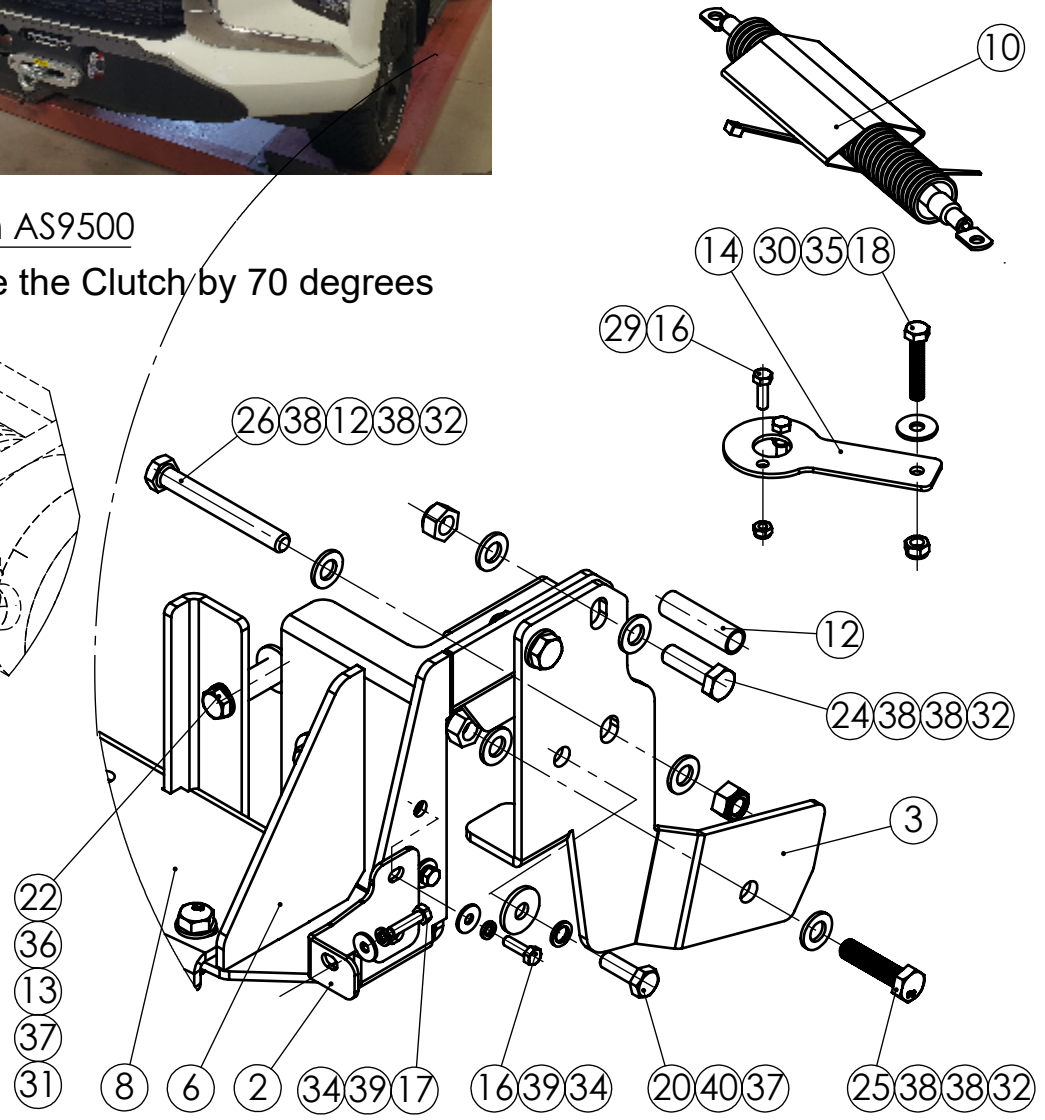
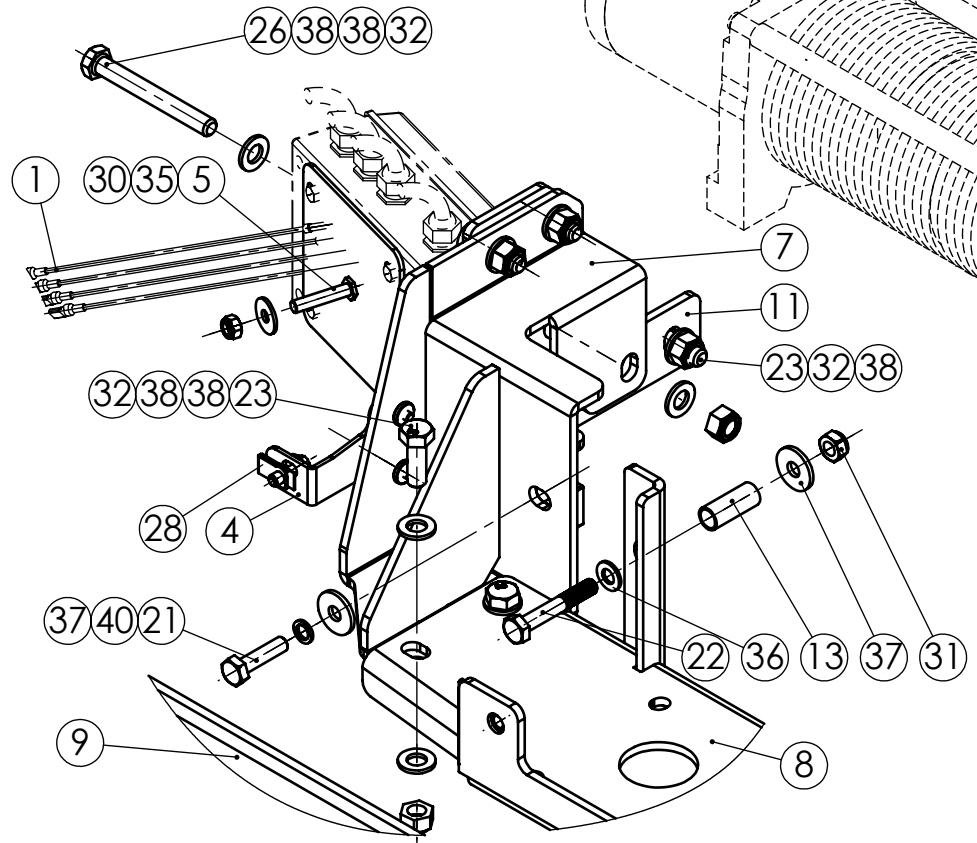
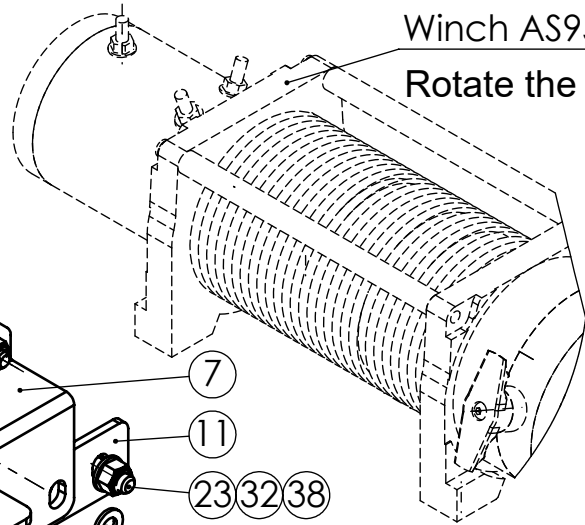
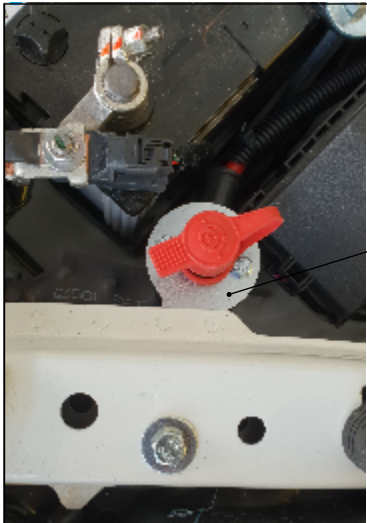


NO	PART NUMBER	DESCRIPTION	QTY.
1	MTW90.000.100	Power Strip for Control Box & Socket	1
2	MTW90.000.001	Left Angle	1
3	MTW90.000.002	Left Holder	1
4	MTW90.000.003	Right Angle	1
5	MTW90.000.015	Solonoid Box Holder	1
6	MTW90.020.000	Left Bracket	1
7	MTW90.030.000	Right Bracket	1
8	MTW90.040.000	Winch Plate	1
9	MTW90.050.000	Front Protector	1
10	MTW70.070.000	Red cable	1
11	MTW70.000.003	Right plate	1
12	MTW70.000.012	Bracket spacer	2
13	MTW70.000.013	Winch plate spacer	2
14	JPW43.000.002	Switch Adapter	1
15	1226	Phillips Head Cap Screws M4x20	2
16	1104	Hex Bolt M6x20 DIN 933	6
17	1167	Hex Bolt M6x25 DIN 933	2
18	1047	Hex Bolt M8x45 DIN 933	1
19	1029	Socket Head Cap Screw M10x1.5x25 DIN 912	2
20	1021	Hex Bolt M10x1.25x30 DIN 961	2
21	1022	Hex Bolt M10x1.25x40 DIN 961	2
22	1023	Hex Bolt M10x1.5x65 DIN 931	2
23	1003	Hex Bolt M12x1.75x35 DIN 933	5
24	1004	Hex Bolt M12x1.75x40 DIN 933	4
25	1050	Hex Bolt M12x1.75x50 DIN 933	1
26	1028	Hex Bolt M12x1.75x100 DIN 931	2
27	3039	Hex Nut Nylock M4 DIN 985	2
28	1040197	Sheet nut long black M6	2
29	3006	Hex Nut Nylock M6 DIN 985	2
30	3005	Hex Nut Nylock M8x1.25 DIN 985	2
31	3020	Hex Nut Nylock M10x1.5 DIN 985	2
32	3001	Hex Nut Nylock M12x1.75 DIN 985	12
33	6145	Washer 4x9 DIN125	2
34	6173	Washer 6x18 DIN 9021	6
35	6000	Washer 8x24 DIN 9021	2
36	6023	Washer 10x20 DIN125	4
37	6010	Washer 10x30 DIN 9021	6
38	6006	Washer 12x24 DIN 125	24
39	6009	Spring washer 6 DIN 127	8
40	6008	Spring washer 10 DIN 127	6
41	6946	Rubber U-shape L=1600mm	1
42	MTW90.000.000I	Instructions	1



				Drawing number	Product Description	
CHG.				MTW90.000.000	Vehicle Manuf.	MITSUBISHI
DWN.	David		05.04.20		Vehicle Model	TRITON
PLN.	David		22.04.20	Drawing description	Vehicle Version	PICK UP L200
CONFIRM	Dani			Hidden Winch Plate	VIN	MMCJLKL60LH020615
ASFIR LTD.					Catalogue number	Year of Product.
				597021	Gear Shift	AUTOMATIC
				Weight,kg 23 Sheet 1 Sheets 2	Motor Model	DIESEL 2.4L / 2.2L
					Transmission	4x4 / 4x2

All rights in and to this document are property of ASFIR Ltd. and reserved to it. This document is forwarded to the recipient under the condition of and subject to the obligation of the recipient to keep the confidentiality of its contents. Copying transfer of distribution of this document or its contents and the use of it not for the purpose intended are strictly forbidden.



ASFIR LTD.		Drawing number	Drawing description
		MTW90.000.000	Hidden Winch Plate
Sheet 2	Sheets 2	Catalogue number	597021